

Contents

Celebrating 22 years	01
Our Management	02
Our Organisation	03
Health, Safety & Environment Policy	04
Our Clients	05

A Gallery of recent projects & areas of capability:

High Rise Residential / Commercial	06
Car Park / Commercial	10
Industrial	12
Government	13
Infrastructure	15
Commercial	16
Aged Care	18
Refurbishment	19
Contacts	21



Celebrating 22 years of **BRIJO Concrete** **Contractors**

With passion and the constant pursuit of perfection, 22 years of hard work has grown BRIJO into the concreting company it is today.

A team of professionals who are committed and excited to bring quality concrete finishes to each day's pours, you will find the BRIJO experience positive from day one.

The number of repeat-work clients, and business relationships spanning years, are a testament to the way in which BRIJO values good communications and workable solutions.

BRIJO continues to look toward growth and new markets.

In 2021, we added a high pressure Line Pump to complement our 42m Boom Pump service.

With experience in private, commercial and government jobs we have capacity to cater to your specific requirements.

We look forward to welcoming you to BRIJO and to showing you first-hand why the BRIJO journey is one we hope you too will enjoy for many years to come.



Our Management



Brian Govorcin
Managing Director

- 33 years in concreting spending the last 22 years establishing his own company BRIJO Concrete Contractors
- Has been involved in such projects as Stadium Australia, Broadway Shopping Centre, RPA Hospital
- Managed 30 men and 3 pumps on his largest pour @ 1,200m³
- Personally oversees the planning of pours prior to placement and co-ordinates with supervisors and site personnel
- Builders Licence 116800C



Antony Esturas
General Manager

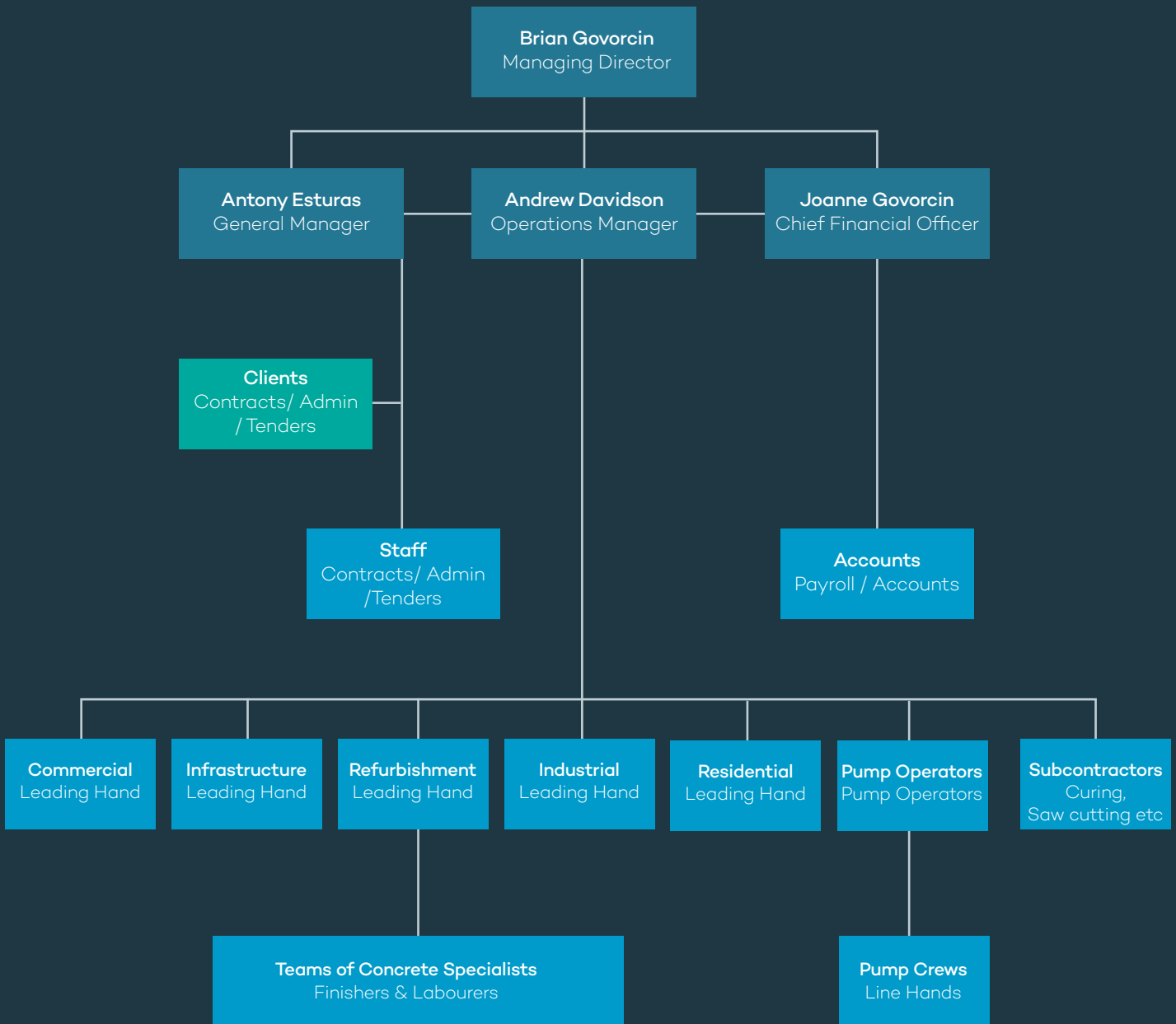
- 34 years in the building industry with accomplishments in the fields of concrete, formwork, reinforcement, structural steel, excavation and demolition.
- A civil engineer by trade having experience in contract administration, estimating and costing, programming, project management.
- Has worked for Ceneaste, Auburn United Formwork, Sky Constructions, Highrise Concrete Contractors, JM Concreting (Aust), Visy Pulp and Paper.



Andrew Davison
Operations Manager

- 26 years in concreting after 6 years a carpenter by trade
- 15 years with BRIJO
- Extensive experience in a variety of venues including Olympic Park Train Station
- Pre-plans pours with BRIJO Leading Hands, Brian and onsite Client representatives
- Ensures clear communications on each job including safety, Toolbox talks, ITPs, sign in procedures and inductions for all personnel
- Manages Tower Boom installation, climbing and maintenance
- Coordinates & pre-plans daily pump and personnel requirements for each job on a fortnightly "look ahead" cycle
- Effectively pre-planned and managed warehouse slab pours of 1300m³ with 3 pumps and over 35 men.

Our Organisation



Health, Safety and Environment Policy

We are committed to a vision of a workplace free of incident or injury wherever we have a presence. Our vision is supported by an uncompromising culture which holds the safety of people and the protection of the environment as first in all our business reviews and decisions.

To achieve our vision we are committed to:

- Complying with applicable statutory obligations and other requirements of codes of practice, compliance codes, standards and guidelines.
- Defining roles, responsibilities and accountability to achieve clarity and predictability across our work force.
- Promoting environmentally sound building techniques and practices that support our environmental aspects and impacts.

Key strategies to achieve our vision include:

- Documenting, implementing and maintaining a Workplace Health Safety and Environment Management Plan.
- Integrating risk management principles in all core planning and delivery activities, including the prevention of pollution.
- Regular reviews to promote continual improvement in performance outcomes.
- Strategic planning and regular review of systems, processes and policies to achieve continual improvement.
- Working with industry to promote leading practices and innovation.
- Reducing reliance on individual behaviours through planning and design delivery solutions.
- Ensuring incidents are investigated and the effectiveness of corrective and preventative actions are reviewed to prevent recurrence.
- Facilitating timely and effective injury management and rehabilitation for injured workers.
- Implementing timely environmental remediation strategies.
- Regular consultation with our workforce and key stakeholders to improve Workplace Health Safety and Environment outcomes.
- Communication of Workplace Health Safety and Environment information, including this policy, alerts and lessons learnt to employees, workers and interested parties.
- Implementing learning and development initiatives to develop environment, health and safety skills and competencies.
- Regular review of resources to ensure the effective management of environment, health and safety.
- Recognising, rewarding and sharing excellence in environment, health and safety.

I commit all of our project teams to this policy.

Brian Govorcin



Managing Director
Date: 22 September 2022

our clients





High Rise Residential / Commercial

1 WOOLLOOWARE BAY TOWN
Stages 2, 3 and 4
(2016-current)

PARKVIEW CONSTRUCTIONS
Frank Karantonis
Project Manager

- Multiple Residential Towers
- Each over 25,000m³

2 SIRIUS SYDNEY
The Rocks
(2022 - current)

RICHARD CROOKES
CONSTRUCTIONS
Guy Bell
Project Manager

- Residential refurbishment
- Landmark Project

3 HOME
Parramatta CBD
(2022 - current)

PARKVIEW CONSTRUCTIONS
Peter Lantouris
Project Manager

- 50 Storey Tower
- water washout system
- over 25,000m³



High Rise Residential / Commercial

4 WHITTON LANE Bondi Junction (2019 – 2021)

Our fourth project & second repeat work Builder in this vicinity

HUTCHINSON BUILDERS
Andrew Rowland
Project Manager

- Residential Towers
- Up to 9,000m³

5 SANCTUARY Wentworth Point Phase 1 (2018 – 2020)

PARKVIEW CONSTRUCTIONS
Anthony Sakkal
Project Manager

- Residential Tower
- Up to 25,000m³

6 WOOLLOOWARE BAY TOWN Stages 2, 3 and 4 (2016-current)

PARKVIEW CONSTRUCTIONS
Frank Karantonis
Project Manager

- Multiple Residential Towers
- Each over 25,000m³



7 "S" by SILKARI - Pagewood
(2017 - 2018)

PARKVIEW
CONSTRUCTIONS
Dennis Vanderaalte
Project Manager

- Residential mid-rise & townhouses
- Up to 15,000m³

8 BANC - Cronulla
(2017)

SAMMUT DEVELOPMENTS
Alan Sammut
Director

- Retail / Commercial / Residential
- Up to 1,500m³

9 THORNTON PARK
St3a Penrith (2017)

ST HILLIERS
Chad Doran - Project Manager

- Residential
- Up to 4,000m³

10 **ATLAS, SAVANNAH & TAIGA
(Stages 9A, B & C)
Wentworth Point
(2014-2017)**

BRIJO tendered for and won each of 3 separate stages for this 5 year project

PARKVIEW
CONSTRUCTIONS PTY LTD
Anthony Sakkal
Project Manager

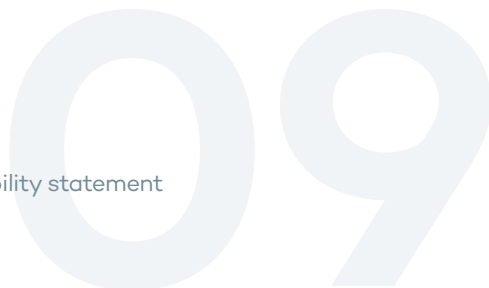
- Residential Towers
- Up to 45,000m³

11 **No1 LACHLAN ST
WATERLOO
(2016)**

PROBUILD
Jono Tuer
Project Manager

- Commercial / Residential building
- Over 10,000m³

10



Car Park / Commercial

1 ATC CARPARK
Randwick Racecourse
(2017 – 2018)

AW EDWARDS
Glen Burley
Project Manager

- Multistorey carpark
- Up to 4,000m³

2 SUPERYACHT
MARINA CARPARK
Rozelle
(2017)

RICHARD CROOKES
CONSTRUCTIONS
Stuart Bell
Project Manager

- SuperYacht Marina Carpark
- Up to 2,400m³

3 DEE WHY RSL
Carpark
(2019-2020)

HUTCHINSON BUILDERS
Garry McLeod
Project Manager

- RSL / Carpark
- Up to 8,000m³

4 TRAVELODGE & WILSON
PARKING, MASCOT
(2017)

PARKVIEW CONSTRUCTIONS
Joseph Saliba
Project Manager

- Commercial Hotel / Carpark
- Up to 12,000m³

5 MERRYLANDS
COMMUTER CARPARK
(2018)

AW EDWARDS PTY LTD
Bradley Doyle
Project Manager

- Carpark – Transport Access Program
- Around 1,500m³



2



3



4





Industrial

1 SURFSIDE E3 & E4 Eastern Creek (2019 – 2022)

HINDMARSH
CONSTRUCTION
Ben Lyle

Project Manager

- Data Centre
- Up to 18,000m³
- Large pours up to 1,300m³
- Coordination of 3 pumps

2 THE BOROUGH Marrickville (2018)

PARKVIEW
CONSTRUCTIONS PTY LTD
James Andrew

Project Manager

- Warehousing
- Up to 4,000m³

3 CDC Data Centre Eastern Creek (2019)

HINDMARSH
CONSTRUCTION
Stuart Bell

Project Manager

- Data Centre – first of 3 stages awarded
- Up to 18,000m³
- Large pours up to 1,300m³



Government

**1 ST PATRICK'S COLLEGE
Strathfield
(2022)**

HANSEN YUNCKEN
Paul Griffiths
Senior Contract Administrator

- Multifunction Building
- Basement Carpark, cafe, catering & science labs, rooftop sports courts

**2 LONG REEF SLSC
(2021-2022)**

GRINDLEY CONSTRUCTIONS
John Paul
Project Manager

- Surf Life Saving Clubhouse
- Cafe and amenities

**3 ALEXANDRIA PARK
COMMUNITY SCHOOL
(2019 – 2021)**

RICHARD CROOKES
CONSTRUCTIONS
Andrew Buchanan
Project Manager

- K-12 School
- Up to 15,000m³
- 2 stage project

4

MORLING COLLEGE
Macquarie University
(2018 – 2019)

GRINDLEY
CONSTRUCTIONS PTY LTD
Asha Meller
Project Manager

- Student Accommodation
- Up to \$500,000
- Up to 3,000m³

5

GARDEN ISLAND DOCKYARD AMENITIES
(2018)

ST HILLIERS
CONSTRUCTIONS PTY LTD
Anthony Casey
Project Manager

- Navy Amenities Block
- Up to 500m³

6

PENSHURST PS
(2020 – 2021)

GRINDLEY CONSTRUCTION
Rodney Peachy
Project Manager

- Multiple storey new school
- Up to 6,000m³

4



5





Infrastructure

ZONE SUBSTATIONS (2012 – 2020)

HASLIN CONSTRUCTIONS

PTY LTD

David Thackray

Project Manager

- Electrical Sub-station
- Up to 1,000m³

1 HUNTINGWOOD

2 MARSDEN PARK

3 MARAYONG

4 MACQUARIE PARK



Commercial

1 THE ALBANY MIXED USE DEVELOPMENT Crows Nest (2017 – 2018)

PAYNTER DIXON PTY LTD
Peter Procopio
Construction Manager

- Mixed Use Development
- Approved concreter for “Coles Supermarkets” by “Concrete Methods”
Peter Killeen 0409 475 192
- Up to 13,500m³

2 NOVARTIS PHARMACEUTICALS CAMPUS Macquarie Park (2014 – 2015)

GANELLEN PTY LTD
Jorjen Gouverous
Project Manager

- Corporate Headquarters
- Up to 5,500m³

2



2



2



2





Aged Care

1 M BY MONTIFIORE (2019 – 2020)

RICHARD CROOKES
CONSTRUCTIONS
Luke Harrold
Project Manager

- Residential Aged Care Facility RACF
- Up to 12,000m³

2 MCQUION PARK, CATHOLIC HEALTHCARE (2020)

PARKVIEW CONSTRUCTIONS
Nissrine Saliba
Project Manager

- Residential Aged Care Facility RACF
- Up to 6,000m³

3 OPAL FERNLEIGH (2021)

GRINDLEY CONSTRUCTIONS
Asha Meller
Project Manager

- Residential Aged Care Facility RACF
- Up to 3,000m³

1



2



Refurbishment

1 SIRIUS SYDNEY (2022 - current)

RICHARD CROOKES
CONSTRUCTIONS

Guy Bell
Project Manager

- Residential refurbishment
- Landmark Project

2 PACIFIC BONDI BEACH APARTMENTS & QT HOTEL formerly Swiss Grand Hotel Bondi

Awarded Urban Taskforce
"Development of the Year"

HUTCHINSON BUILDERS
Justin Clark

- Project Manager
- Mixed Use Development
 - Up to 5,500m³

contacts

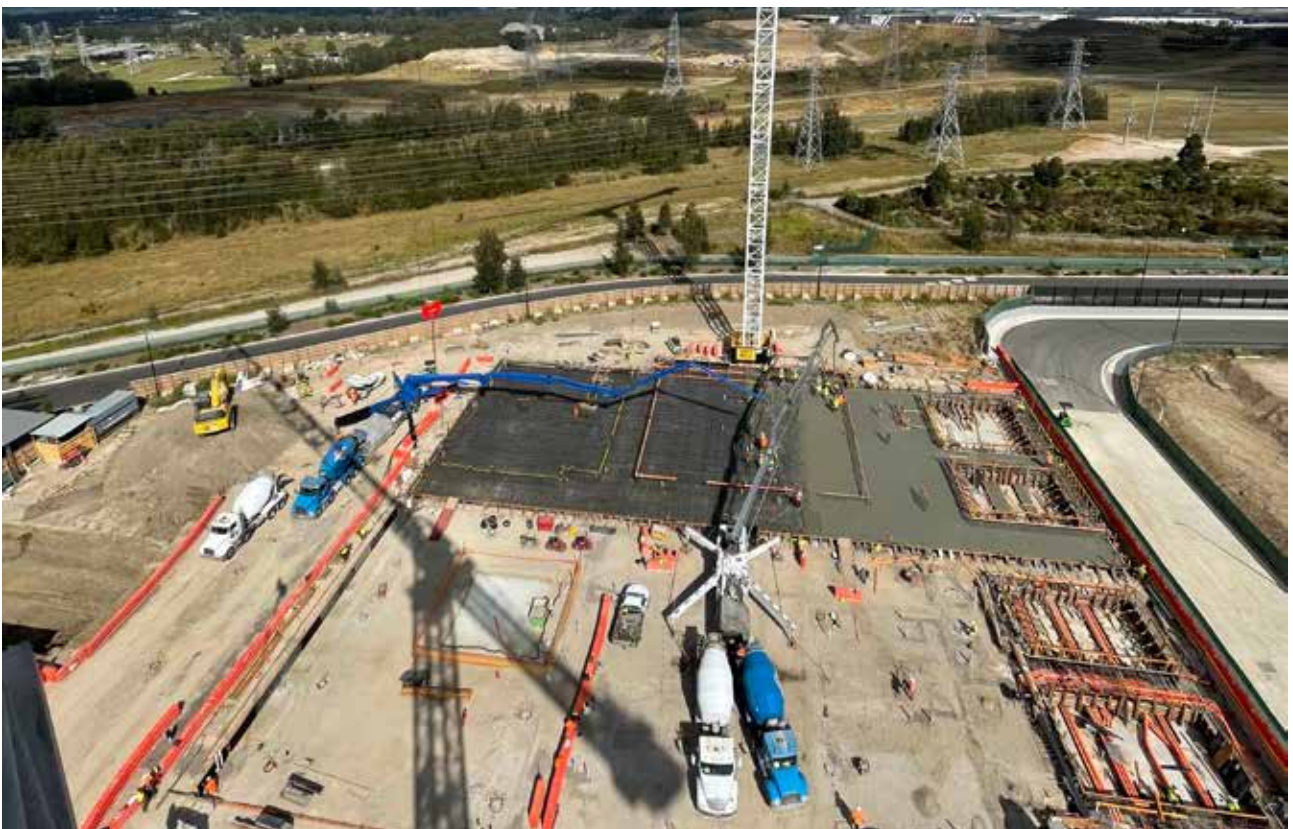
Company: Brijo Concrete Contractors Pty Ltd
Head Office: 10 Regatta Road Five Dock NSW 2046
Telephone: 02 9745 3002
Main Email: admin@brijo.com.au
Pumping: pump@brijo.com.au

Brian Govorcin

Managing Director
Mobile: 0412 448 819
Email: brian@brijo.com.au

Antony Esturas

General Manager
Mobile: 0416 022 461
Email: antony@brijo.com.au





brijo.com.au



BRIJO
CONCRETE CONTRACTORS